

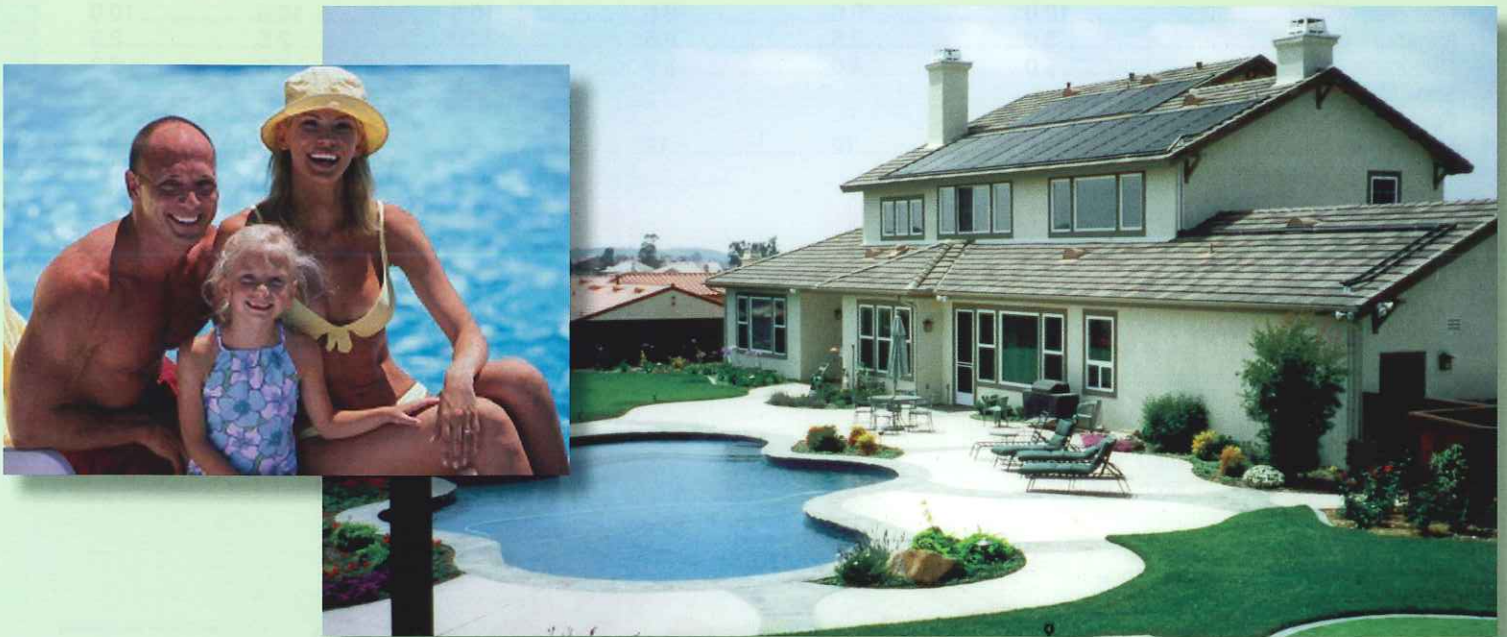


## Simply Wonderful...

Owning a swimming pool means poolside parties... early morning workouts... refreshing dips... family fun and romantic late night swims. Owning an AquaSol pool heater means more enjoyment more often. Join the hundreds of thousands of pool owners that have extended their swimming seasons with a solar pool heating system.

## Wonderfully Simple...

The AquaSol pool heater is designed to work with your existing pump and equipment. Using your existing pool pump, water is circulated through the many small passages of the solar collector, where it is warmed by the sun. This warm water then flows directly back to your pool through the regular pool plumbing.



## Quality

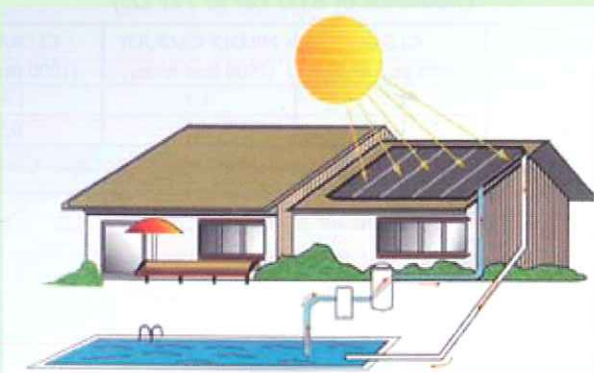
AquaSol solar collectors are made from a specially formulated polymer designed to withstand extreme exposure to weather, ultraviolet rays and oxidation. These solar panels are impervious to pool chemicals and will not corrode, pit, nor discolor your pool or spa. They have a proven life expectancy in excess of 20 years.

## Savings

Save on energy costs and use clean 'green' solar energy. A solar pool heating system creates no pollution and the fuel is free sunshine.

## Ten Year Warranty

AquaSol collectors lead the way in value backed by a Ten Year Warranty. You can relax with AquaSol knowing that you own the "best backed" system in the world.



AquaSol, a division of ELM Distribution

# TECHNICAL DATA

Available in 1 1/2" or 2" low profile design

## DIMENSIONS

	1-1/2"			2"		
Nominal Size-fit	4 x 12	4 x 10	4 x 8	4 x 12	4 x 10	4 x 8
Overall Collector Length-in	144.0	120.0	96.0	144.0	120.0	96.0
Collector Width-in	47.0	47.0	47.0	47.0	47.0	47.0
Manifold Length-in	50.5	50.5	50.5	50.5	50.5	50.5
Manifold O.D.-in	1.9	1.9	1.9	2.4	2.4	2.4
Manifold I.D.-in	1.5	1.5	1.5	2.0	2.0	2.0
Gross Collector Area-ft <sup>2</sup>	47.3	39.3	31.4	47.3	39.3	31.4
Net Collector Area-ft <sup>2</sup>	47.3	39.3	31.4	47.3	39.3	31.4

## WEIGHTS

Dry-lbs.	21.3	17.1	14.3	22.30	18.1	15.3
Wet-lbs.	48.0	41.6	35.1	54.00	47.6	41.1
Wet-lbs./ft <sup>2</sup>	1.01	1.06	1.12	1.14	1.20	1.31
Fluid Capacity-gal	3.2	2.9	2.5	3.80	3.5	3.1

## FLUID FLOW RATES

Maximum-GPM	10.0	10.0	10.0	10.0	10.0	10.0
Minimum-GPM	3.0	2.5	2.5	3.00	2.5	2.5
Recommended-GPM	5.0	4.0	3.3	5.00	4.0	3.3
Max. Collectors with Single Feed @ Recommended Flow Rate	10	12	12	12	14	14

## CERTIFICATIONS, APPROVALS & TESTING

- National Sanitation Foundation (NSF -50)
- International Association of Plumbing and Mechanical Officials (IAPMO)
- ISO 9806 Standard.

## PRESSURES

Pressure Drop (ft. hd)	0.05 @ 2.5 gpm, 0.20 @ 5.0 gpm 0.60 @ 10.0 gpm
Recommended Max Operation Pressure	50 psi @ 77° F
Design Burst Pressure	75 psi @ 77° F, 35 psi @ 140° F
	Greater than 100 psi @ 140° F

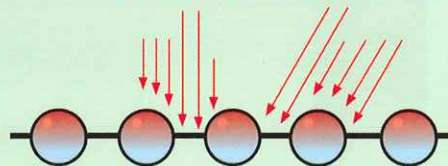
(Tested and Certified in accordance with NSF/ANSI Standard 50; 2010)



## MATERIALS

Absorber Plate - Propylene copolymer with synergistic antioxidants and UV screen including carbon black.  
 Mounting Brackets - Glass reinforced polypropylene.  
 Holding-Down Straps - High tensile woven polyester.  
 Connecting Hoses - Dual-Durometer EPDM.  
 Clamps - Type 302/304 all stainless steel.

## PROVEN PERFORMANCE IN ALL CLIMATES



Cross section of an Aquasol Collector, featuring "Sun Tracking" Design.

Engineered "tube and web" construction relieves the thermal stress of expansion and contraction assuring years of trouble free operation.

Thermal Performance Equation:  $n = 0.9248 - 0.0512 - (4.76 + 1.998u)$   
 (Tested and Certified in accordance w/ISO 9806)

Thousands of BTU Per ft <sup>2</sup> Per Day			
Category (Ti-Ta)	CLEAR (2000 Btu/ ft <sup>2</sup> day)	MILDLY CLOUDY (1500 Btu/ ft <sup>2</sup> day)	CLOUDY DAY (1000 Btu/ ft <sup>2</sup> day)
A (-9 degC)	2.1	1.7	1.4
B (9 degC)	1.3	0.9	0.5

A-Pool Heating (Warm Climate) B-Pool Heating (Cool Climate)

Available through:

